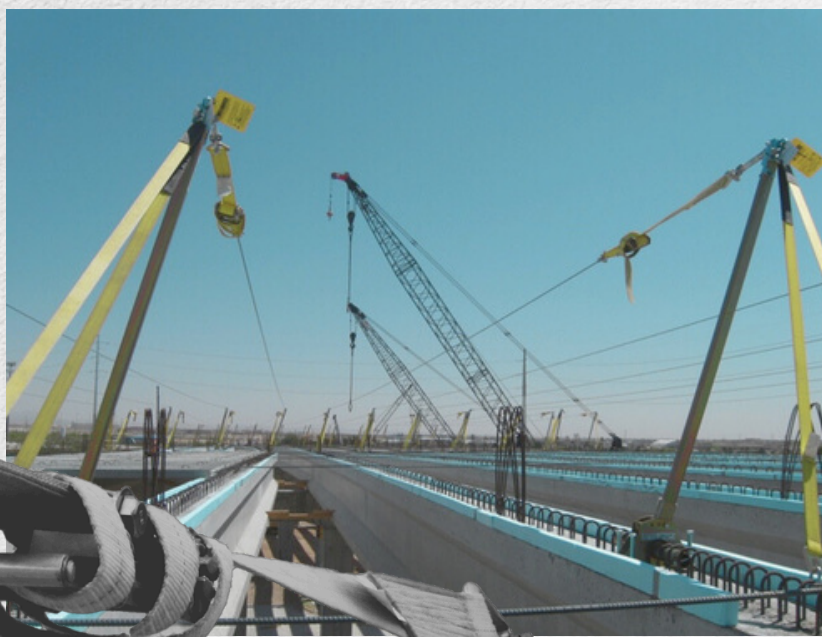


FALL SAFE™

SKYLINE™ HORIZONTAL LIFELINE SYSTEM

WORK SAFELY WHERE OVERHEAD ANCHORS CAN'T GO

In civil, commercial, and industrial job sites, fall protection can't be an afterthought – especially when there's no safe overhead anchorage in sight. Whether you're building bridges, working refineries, or maintaining steel and concrete infrastructure, the Skyline™ Horizontal Lifeline System delivers industry-leading safety where traditional fall protection falls short.



WHY CHOOSE SKYLINE?

CLEARANCE-REDUCING DESIGN

Skyline combines elevated stanchion height (5', 6', and 7') with a tuned cable system and an energy-absorbing inline design to reduce required fall clearance to as low as 10' – a full 9+ feet less than many competitors.

VERSATILITY THAT ADAPTS TO YOUR JOBSITE

From Nelson studs and looped rebar to massive 42" wide girders, Skyline offers an unmatched selection of clamp and bracket options – making it the most adaptable HLL system on the market.

ENGINEERED FOR SAFETY & SIMPLICITY

Engineered for up to 4 workers, the system provides overhead anchorage-level safety – without the need for overhead anchors. Easy-to-understand fall clearance calculations with online tools and full engineering support reduce complexity and risk.

MORE THAN JUST EQUIPMENT—IT'S EXPERTISE

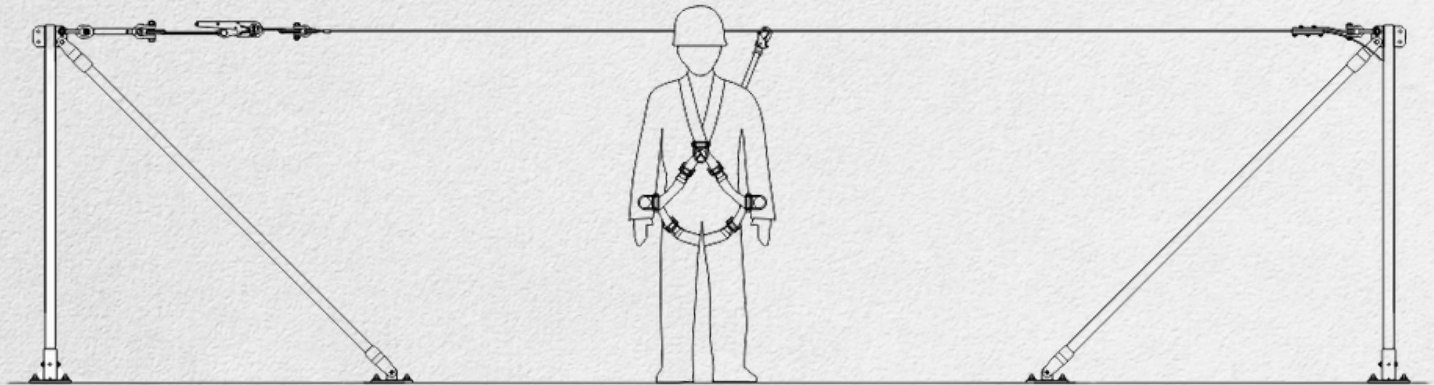
Fall Safe™ doesn't just supply components. We review drawings, recommend optimal clearance setups, and support you with layout design – so you get it right the first time.

Part Number	Description (up to 2 User Solution)
6001060	60-ft span HLL with 6262 Shear Stud Brackets - 6' ST
6002100	100-ft dual-span HLL with mid-span bypass + 6262 Shear Stud Brackets - 6' ST
6011060	60-ft span HLL with 6170 Looped Rebar Brackets - 6' ST
6012100	100-ft dual-span HLL with mid-span bypass + 6170 Looped Rebar Brackets - 6' ST
6021060	60-ft span HLL with 6240 I-Beam Anchor Clamp Brackets - 6' ST
6022100	100-ft dual span HLL with bypass + 6240 I-Beam Anchor Clamp Brackets - 6' ST

For your user solution contact your sales representative.



HOW SKYLINE™ STACKS UP AGAINST COMPETITION



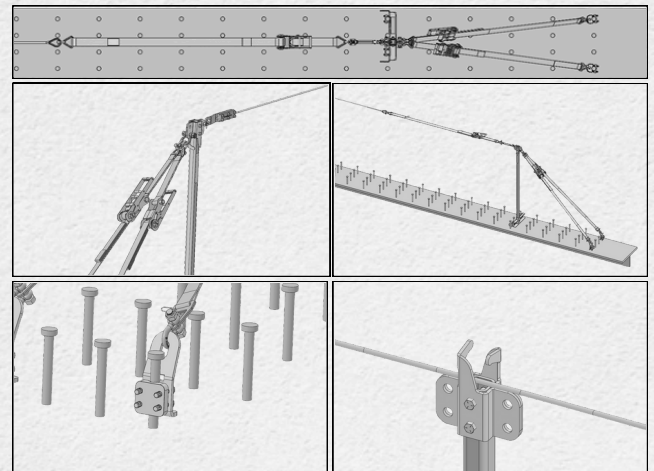
FALL CLEARANCE DIFFERENTIATIONS

BRANDS	Fall Clearance	Users
Fall Safe™ SKYLINE™ Horizontal Lifeline system	10 FT ●	4
Competition	20 FT + ●	2

Fall Safe™ SKYLINE™ HLL Saves 9' –10' of fall clearance.

10-FT FALL CLEARANCE

20-FT + FALL CLEARANCE



KEY DIFFERENTIATORS AT A GLANCE

Feature	Skyline™	Competitors
Standard 6' – 7' Stanchions	✓	✗ Most stop at 42"
Can be engineered up to 4 users	✓	△ Typically 2
Rebar, Steel & Concrete Anchoring	✓ Wide range	△ Limited or none
Engineering, Layout Support & Training	✓	△ Rare or extra cost
Online Clearance Calculator	✓	✗
Require clearance of 10 ft or less	✓	✗